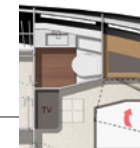
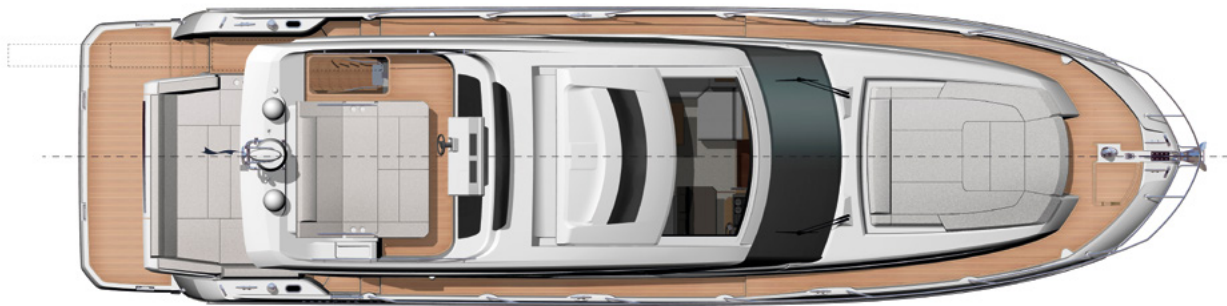


SportFly

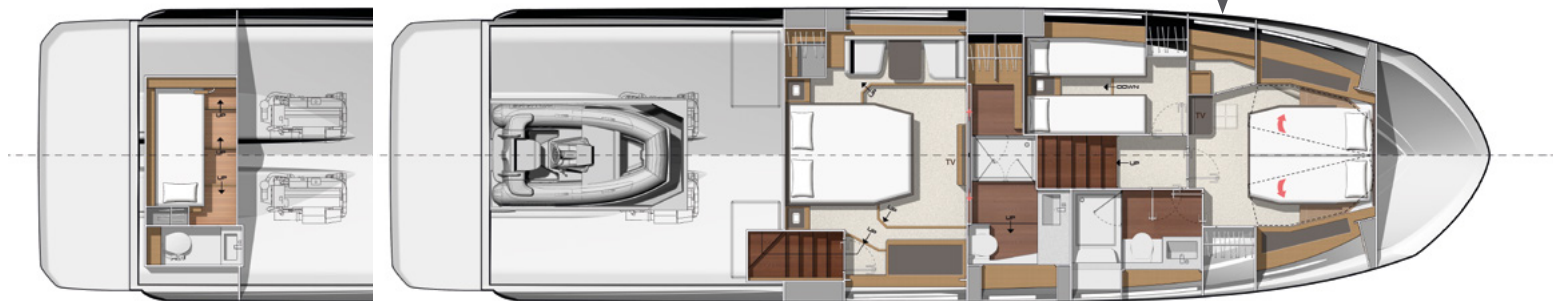
NEW | PRESTIGE 590S



Overall length	61'4"	18,7 m
Overall beam	15'11"	4,84 m
Draft	4'5"	1,35 m
Light displacement	42 368 Lbs	19 218 kg
Fuel capacity	581 US gal	2 200 L
Water capacity	201 US gal	760 L
Hot water heater capacity	16 US gal	60 L
Accommodation	6 + 1	
Category	B - 12 / C - 14	
Engine	Cummins 2 x QSC 8.3 - 600 HP - ZEUS Cummins 2 x QSC 8.3 - 600 HP - V-Drive	



**Model available with walk-in closet or bathroom*



Model available with tender garage or skipper cabin

ENGLISH / Standard equipment

Deck

- Stainless steel stem head fitting with anchor roller
- Anchor stop
- Electric windlass with wired remote in anchor locker (24V)
- Chain counter and windlass controls at lower helm and flybridge
- Anchor locker with dedicated space for fender storage
- Stainless steel cleats (10)
- Stainless steel handrails
- Stainless steel rubrail
- Foredeck sunpad area
- Foredeck seating area

Bathing platform

- Teak-laid bathing platform
- Hot and cold shower
- Stainless steel bathing ladder

Cockpit

- L-shaped seating area
- Teak-laid cockpit flooring
- Stainless steel ladder to flybridge with teak steps
- Access hatch to the engine room with gas struts
- Transom safety gate
- Lateral door in coaming
- 2 marine stereo speakers
- Upholstered ceiling panels with integrated LED lighting

Sportfly

- Large, opening electric GPR roof
- Helm console with engine throttles and maneuvering joystick, compass, 12V plug, cup holders and storage compartment
- Stainless steel guard rails
- Flybridge sunpad with adjustable back rests
- GRP arch with space for antennas and radar
- Radio / MP3 remote control
- 2 marine stereo speakers

Interior helm station

- Helm console with engine throttles and maneuvering joystick, full engine instrumentation, compass and cup holders
- Twin helm sport seats
- Windscreen wipers with intermittent setting and washers
- Windscreen demister
- USB plugs
- Horn

Saloon

- U-shaped sofa seating
- Varnished table on stainless steel base
- Sofa
- Sliding lateral door to starboard
- Side window pleated blinds
- Wooden flooring
- Removable carpet set
- Radio / CD / MP3 with Bluetooth in saloon
- 2 stereo speakers

Galley

- Stainless steel sink
- Mixing tap with pull-out sprayer
- Combination microwave / grill
- 3-zone induction cooktop
- Extractor hood
- Corian worktop
- Fridge (178L / 47 US gal) dual voltage
- Freezer (42L / 11 US gal) dual voltage
- Waste bin
- Storage drawers and cupboards
- Wrap-around galley with cockpit bar
- Wooden flooring

Master stateroom

- Independent access via private stairway
- Double bed (198 cm x 160 cm / 6'5" x 5'2")
- 2 reading lamps
- Bedside tables with storage
- Large closet with shelving
- Walk-in closet with shelving
- Storage cabinet
- Vanity desk with mirror and vis-à-vis seating
- Panoramic side windows with blinds and opening ports
- Removable carpet set
- AC and USB plugs
- En suite bathroom with dual access via pocket doors
- Corian countertops and washbasin
- Separate shower compartment
- Freshwater electric toilets
- Extractor fan
- AC plug
- Opening port

VIP stateroom

- Double bed (204 cm x 156 cm / 6'8" x 5'1") convertible into 2 single berths
- 2 reading lamps
- Large closet with shelving
- Walk-in closet with shelving
- Dressing table with mirror and stool
- Large side windows with blinds and opening ports
- Overhead skylight with opening hatch with shade / insect screen
- Removable carpet set
- AC and USB plugs
- En suite bathroom
- Corian countertops and washbasin
- Separate shower compartment
- Freshwater electric toilets
- Extractor fan
- AC plug
- Opening port

Guest stateroom

- 2 single berths (194 cm x 63 cm / 6'4" x 2'4") convertible in double berth
- Reading lamp
- Bedside table with storage
- Large closet with shelving
- Large side window with opening port
- Removable carpet set
- AC and USB plugs

Crew accommodation - Option

- Single berth (198 cm x 81 cm / 6'5" x 2'7")
- Storage closet
- Separate bathroom with toilet, washbasin and shower
- Additional holding tank (50L / 13 US gal)
- Large window on the transom with blinds
- Crew door access from cockpit

Propulsion

- ZEUS Drive system
- Electronic power steering
- Electronic engine controls and throttles at each helm
- Joystick system for ZEUS
- Skyhook Digital Anchoring
- Autopilot
- Bronze seawater strainers
- Forced air ventilation system for engine room

Electrical system

- Battery bank (24V) - Engine (120 A/h)
- Battery bank (24V) - House (420 A/h)
- Battery bank crossover switch at helm
- Tactile graphic display for battery levels, AC sources, lighting and tank levels
- Remote battery switches

- Centralized distribution and breaker boxes for AC and DC systems
- AC shore power system
- Twin battery chargers 2 x 40A - 24V
- LED interior and exterior lighting with dimmer switches
- AC plugs in each cabin and in the galley and saloon

Fuel system

- 2 fuel tanks (aluminum) with interconnection valves (2200L / 581 US gal)
- Fuel fills to port and starboard with crossover valve
- Remote shut-off valves in aft companionway

Water system

- Freshwater tanks (760L / 201 US gal)
- Hot water heater (60L / 16 US gal)
- Freshwater pressure pump
- Grey water sump pump with automatic discharge
- Holding tank (170L / 45 US gal)
- Overboard discharge pumps for holding tanks with macerator function and deck pump-out
- Automatic bilge pumps (4) with high water alarm
- Manual bilge pump

Systems

- Automatic fire extinguishers in engine room with control at each helm (Novtec 1230)

Construction

- Infused GRP hull with longitudinal infused stringers
- Infused GRP deck with counter molding
- Isophthalic gelcoat
- Osmosis barrier

Additional standard equipment

- User and Owner's manuals
- Captain's briefcase with set of manuals

North American specifications

- Chilled water air conditioning incorporating reverse cycle heating (72 000 BTU)
- 13,5kW generator with underwater silent exhaust
- AGM Gel batteries bank upgrade
- Galvanic Isolator
- Cathodic bonding system with dedicated anodes
- Additional waste holding tank (88L / 23 US Gal)
- Wooden flooring in main saloon